

WM3Cctl 1r1

User Manual

Table Of Contents

Introduction..... 3

Requirements..... 3

Installation..... 3

 Installation..... 3

 Un-installation..... 3

Usage..... 4

Introduction

WM3Cctl is a simple tool used to create a M3C filesystem on MultiMediaCards. The M3C filesystem is used by the Pontis SP503 MP3 player.

WM3Cctl treats the MultiMediaCard as a separate disk drive. Thus, you need a card reader to create the filesystem.

WM3Cctl cannot be used to create the M3C filesystem via the serial or parallel ports.

Requirements

WM3Cctl needs the following to function:

1. Microsoft Windows 2000 or better.
2. Microsoft .NET framework v1.1 or better. The .NET framework can be gotten from <http://msdn.microsoft.com/netframework/>
3. MultiMediaCards – in theory, cards up to 4GB should work. WM3Cctl have been tested with 16MB, 32MB and 128MB cards.
4. A card reader.

Installation

Installation

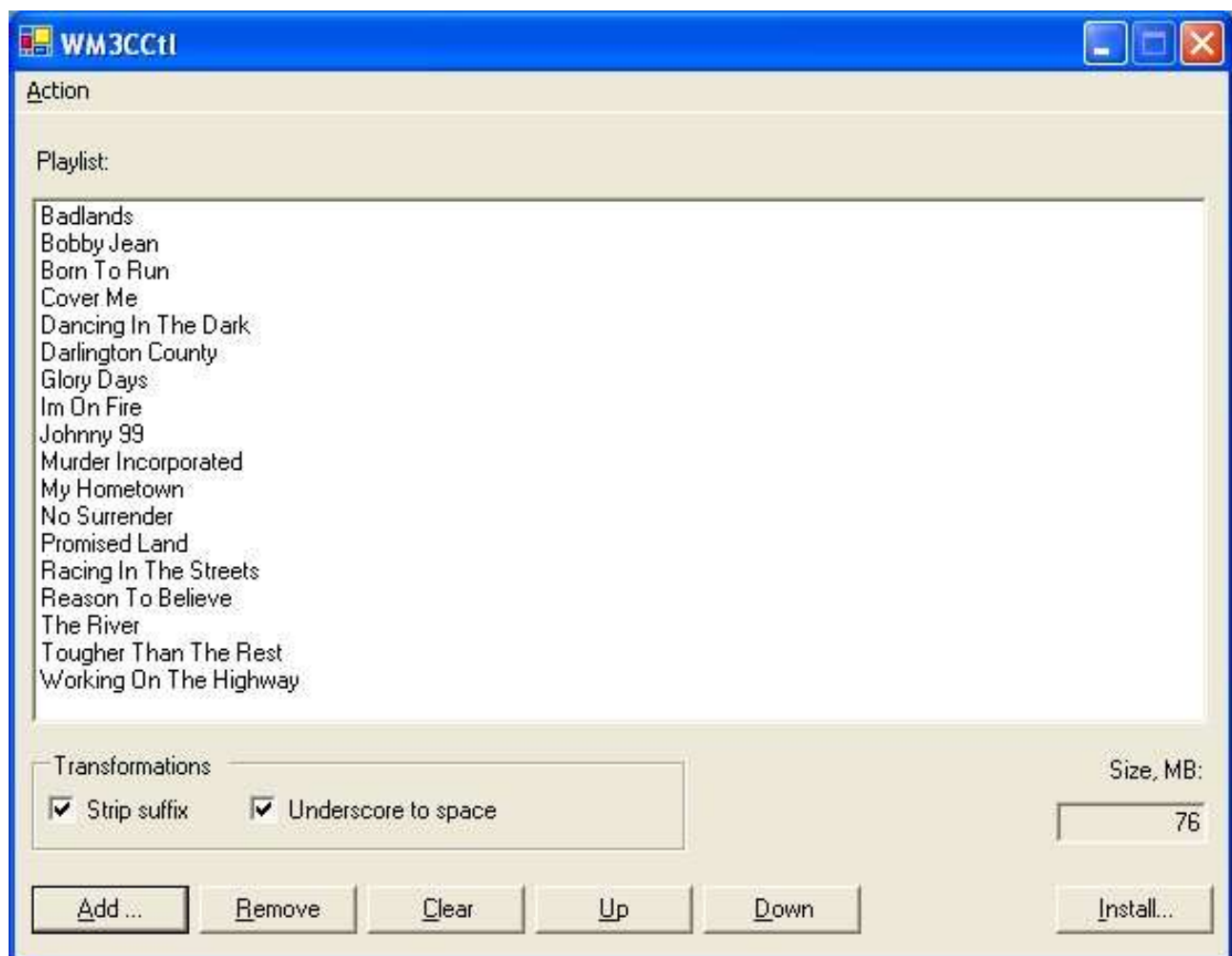
Launch the `wm3cctl-1r1.exe` setup file and follow the on-screen instructions.

Un-installation

WM3Cctl can be removed via the *Start → Control Panel → Add/Remove Programs* panel.

Usage

Insert the MultiMediaCard into the card reader. Launch WM3CCtl and add and remove tracks to be installed using the **Add** and **Remove** buttons. Clear the Playlist using the **Clear** button. Arrange the individual tracks by using the **Up** and **Down** buttons:



Use the **Transformations** check boxes to tidy up the Track names. When ready to install the Playlist and tracks to the MultiMediaCard click **Install**:



Select the Drive Letter corresponding to your MultiMediaCard. Take care with this as the wrong drive letter might mean you lose data.
Enter a card name in the Name field.
Press **Cancel** to abort or press **OK** to start installing the Playlist and tracks:



You are notified when the process is over.

That's it – take care!